

Standard operating procedure for entering a patient's home

Please read and follow these instructions at all times



Please do not enter a patient's home if you are unwell. Contact your line manager and discuss your symptoms.



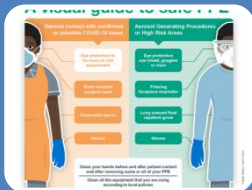
On arrival to the patient's place of residence apply a fluid repellent face mask in the car

Only bring in to the patient home the equipment required



On arrival to the patient's home please wash your hands for 20 seconds and apply hand sanitiser. If you cannot wash your hands please ensure you apply hand sanitiser as provided by the Trust

Explain to the patient why you are wearing PPE



Now apply your gloves and aprons as part of your PPE and, where appropriate, eye protection dependent on procedure

You now need to remain in PPE at all times during the visit



Remove mask, gloves and apron and dispose of in the patient's household waste. If this is declined then follow the procedure for COVID waste to be returned to clinical area using red transport box

Clean any equipment at the end of the clinical intervention



On exit from the patient's property clean any equipment at the end of the clinical intervention and wash your hands and apply hand sanitiser